

CA® Pro gets a matte finish

Scheu's multilayer aligner film CA® Pro will get a matte surface in Q1 2022.

To ensure continuous high surface quality, the finish of CA® Pro will change from clear to matte in Q1/2022. It is a small change in manufacturing process, which leads to slight optical and haptic change. The film looks more matte, feels a bit more grippy than the CA® Pro with a clear finish. After thermoforming, the doctor and patient do not see or feel any difference. The material properties and treatment success are not affected by this change.

The changeover will be made for all material thicknesses of CA® Pro and CA® Pro+. The delivery of the material with matte finish will start as soon as the stock of the material with clear finish is sold. Since the stock levels for different material thicknesses are different and also the production times for different material thicknesses are different, it may happen that an order containing different material thicknesses may contain one material still in the clear finish and the other already in the matte finish. We will try to avoid such cases within our possibilities, but we cannot exclude it completely.

Part numbers, packaging or prices will not change.

Below you will find pictures of the CA® Pro with clear and matt surface before and after thermoforming

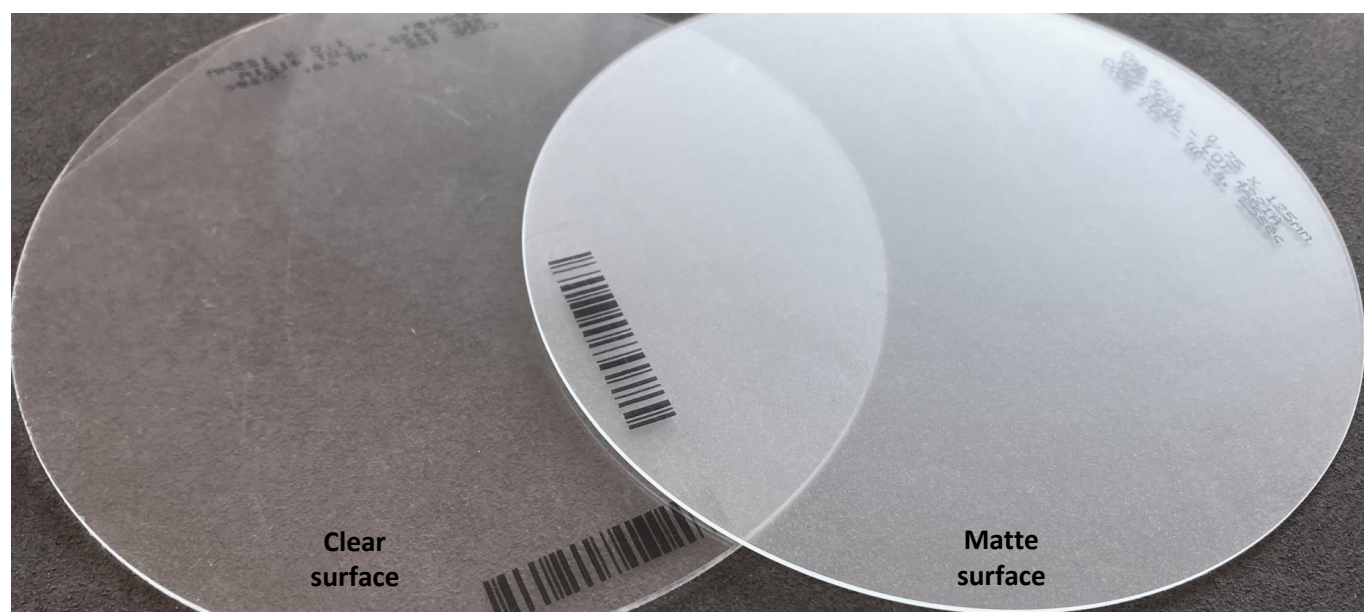


Figure 1: CA® Pro with clear surface and matte surface



Figure 2: Aligner manufacture with CA® Pro 0,75 with matte surface (left) und clear surface (right)